

FURR	George Melville
-------------	-----------------

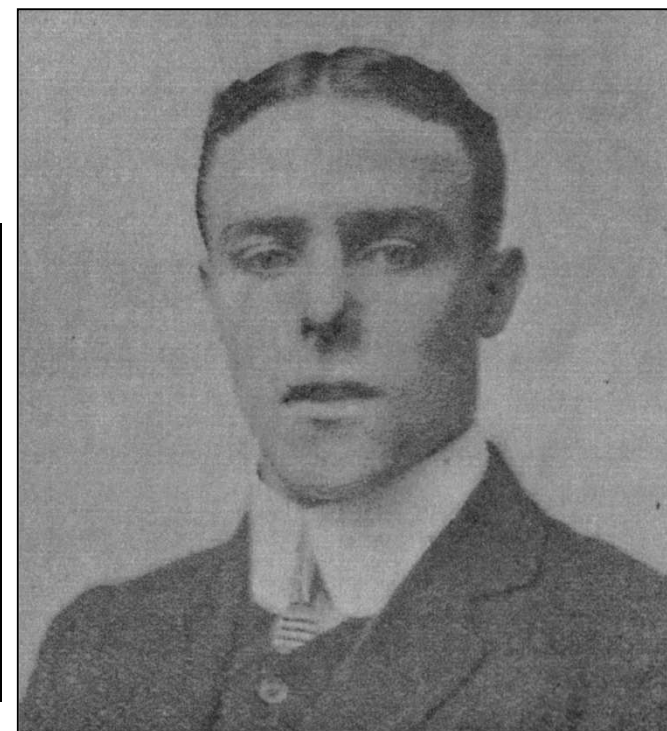
<i>Date of Birth</i>	14.8.1885	<i>Place of Birth</i>	Barnet		
<i>Date of Death</i>	2.1.1967	<i>Place of Death</i>	Letchworth		
<i>Height</i>	5ft 7in	<i>Weight</i>	10st 7lb	<i>Position</i>	Winger

<i>Club</i>	<i>Joined</i>	<i>Season</i>	<i>F L</i>		<i>F A</i>		<i>S L</i>		<i>U L</i>		<i>S E</i>		<i>TOTALS</i>	
			<i>A</i>	<i>G</i>	<i>A</i>	<i>G</i>	<i>A</i>	<i>G</i>	<i>A</i>	<i>G</i>	<i>A</i>	<i>G</i>	<i>A</i>	<i>G</i>
Hitchin St. Johns														
Hitchin Town	1903													
Biggleswade	8.1906													
Watford	7.1907	1906-07							3	3			3	3
		1907-08			1	0	20	3			2	0	23	3
		1908-09			3	0	17	0					20	0
Manchester City	5.1909	1909-10	3	0									3	0
Watford	11.1910	1910-11												
Croydon Common	8.1911	1911-12			1	0	2	0			2	0	5	0
Watford	cs1912													
		TOTALS	3	0	5	0	39	3	3	3	4	0	54	6

<i>Internationals</i>	None	<i>F.A. Cup Finals</i>	None
-----------------------	------	------------------------	------

<i>Cigarette/Trade Cards</i>				
<i>Company</i>	<i>Year</i>	<i>Number</i>	<i>Series</i>	<i>Club</i>
Taddy	1908	N/A	Prominent Footballers	Watford

<i>Jottings</i>
The brother of HAROLD FREDERICK who also played for the Common
The 1891 Census records him living at Ashford Villas, Leicester Road, Chipping Barnet, with his father Fredrick (30), a postman, with mother Emma (29) and siblings Milly (Amelia - 8), Harold (4) and Miriam (2) - together with a niece (1) and a sister-in-law (15)
Another brother, WILLIAM STANLEY, (born Hitchin 22.7.1891 and died Biggleswade Q4 1975) played for Hitchin Town, Everton (trial 12.1911), Brentford (1.1912), Leicester Fosse (7.1912), Luton Town (trial 8.1913) and Luton Town again (1919)
Another brother, VICTOR REGINALD, (born Hitchin 26.4.1897 and died Winterton-On-Sea 16.10.1976) played for Hitchin Town and Watford (9.1924) as an amateur
His sister Amelia married BILLY GRIMES (Watford, Glossop, Bradford City and Derby County) in 1907 and his sister Miriam married GEORGE PAYNE (Tottenham Hotspur, Crystal Palace and Sunderland) in 1909
Was Honorary Secretary of Hitchin St. Johns FC
Was captain at Hitchin Town in 1904
Joined Watford as an amateur and turned professional there in July 1907 and rejoined the club as an amateur in 1912
Appeared for Croydon Common in 1 minor cup match, without scoring
He later became a fishmonger, like his father, and built up a number of fishmongers and chip shops across Hertfordshire - ultimately leaving his business empire (which also included a number of betting shops) to his four sons
Was the founder of Stevenage Town F.C., managing the club, personally paying for the building of the first stand and acting as guarantor for the mortgage on the ground



FURR | George Melville

Jottings (continued)

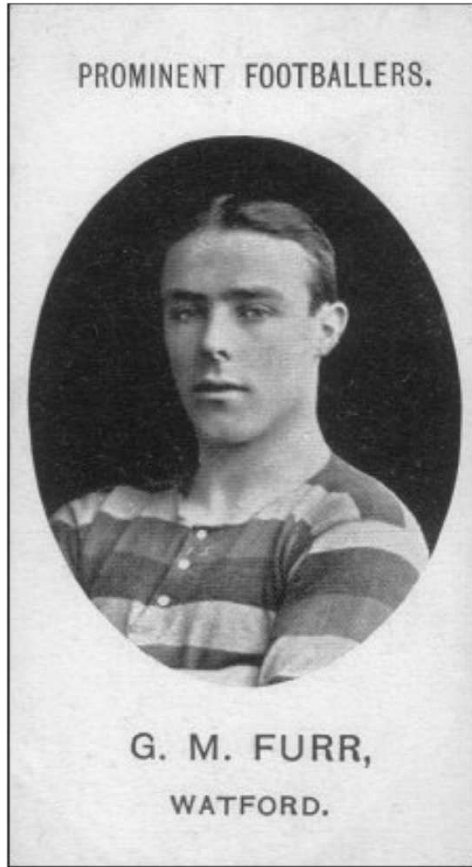
Married Annie Harriett Vaughan and they had five children, including three sons, Romily, Augustus and Douglas

The 1901 Census records him living at 5 Bridge Street, Hitchin with his father, now a fish merchant, his mother, his six siblings and two servants

The 1911 Census records him as a fishmonger living at 3-5 Bridge Street, Hitchin with his wife and son, along with his parents and numerous relatives, boarders and servants

One of his sons was a leading goalscorer for Stevenage Athletic prior to World War 2

More than one of his sons signed terms with Watford and one, Romily (a triallist with Arsenal and Tottenham Hotspur) starred for Hitchin Town before doing so



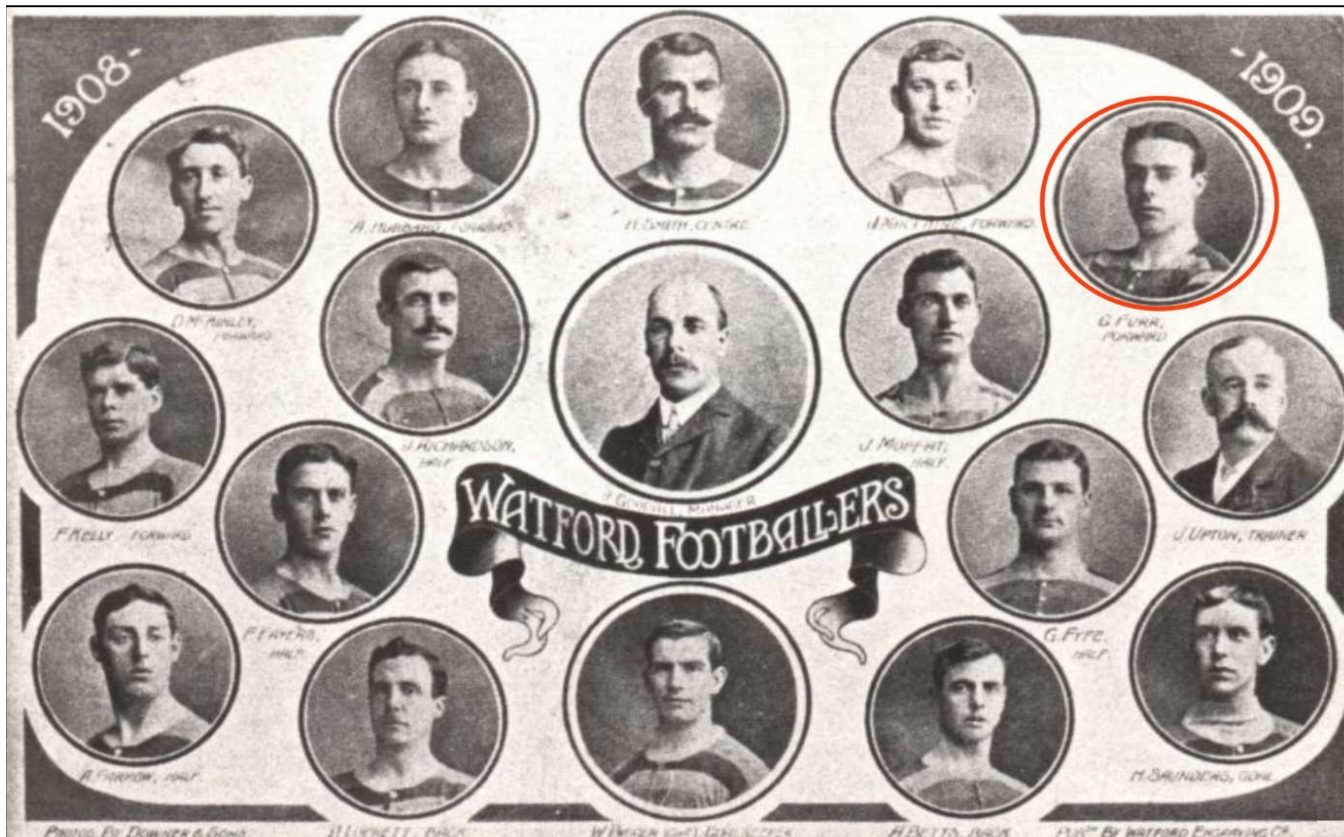
Taddy 1908



A Watford postcard from 1907-08



Watford 1907-08



Watford 1908-09



Manchester City 1909-10