

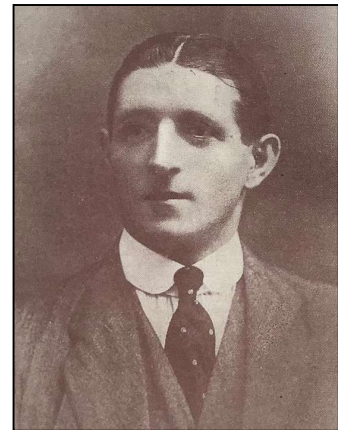
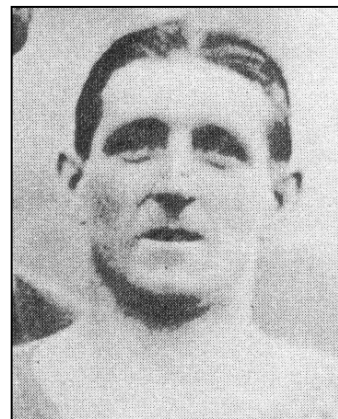
HARROW Jack Harry

<i>Date of Birth</i>	8.10.1888	<i>Place of Birth</i>	Beddington, Croydon		
<i>Date of Death</i>	19.7.1958	<i>Place of Death</i>	Croydon General Hospital		
<i>Height</i>	5ft 8.5in	<i>Weight</i>	11st 10lb	<i>Position</i>	Full Back

<i>Club</i>	<i>Joined</i>	<i>Season</i>	<i>F L</i>		<i>F A</i>		<i>S L</i>		<i>W L</i>		<i>S E</i>		<i>L L</i>		<i>L C</i>		<i>TOTALS</i>	
			<i>A</i>	<i>G</i>	<i>A</i>	<i>G</i>	<i>A</i>	<i>G</i>	<i>A</i>	<i>G</i>	<i>A</i>	<i>G</i>	<i>A</i>	<i>G</i>	<i>A</i>	<i>G</i>	<i>A</i>	<i>G</i>
Mill Green Rovers																		
Croydon Common		1908-09							1	0	4	2					5	2
		1909-10						15	3								15	3
		1910-11			3	0	17	1			25	0	7	1			52	2
Chelsea	3.1911	1911-12	12	0	1	0											13	0
		1912-13	6	0													6	0
		1913-14	20	0	2	0											22	0
		1914-15	22	0	7	0											29	0
		1915-16													15	2	15	2
		1916-17													26	3	26	3
		1917-18													3	0	3	0
		1918-19													23	0	23	0
		1919-20	39	2	5	0											44	2
		1920-21	40	2	8	0											48	2
		1921-22	38	1	1	0											39	1
		1922-23	40	0	3	0											43	0
		1923-24	38	0	2	0											40	0
		1924-25	34	0													34	0
		1925-26	15	0													15	0
		TOTALS	304	5	32	0	32	4	1	0	29	2	7	1	67	5	472	17

<i>Internationals</i>						
<i>For</i>	<i>Date</i>	<i>Season</i>	<i>Club</i>	<i>Against</i>	<i>Score</i>	<i>Venue</i>
England	21.10.1922	1922-23	Chelsea	Ireland	2-0	West Bromwich
England	21.5.1923	1922-23	Chelsea	Sweden	4-2	Stockholm

<i>F.A. Cup Finals</i>					
<i>For</i>	<i>Date</i>	<i>Season</i>	<i>Against</i>	<i>Score</i>	<i>Venue</i>
Chelsea	24.4.1915	1914-15	Sheffield United	0-3	Old Trafford, Manchester

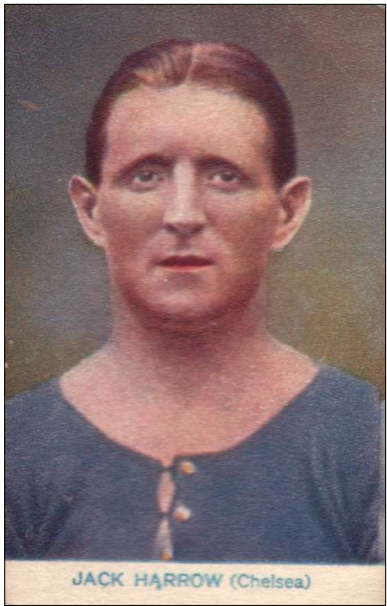


HARROW	Jack Harry
---------------	------------

<i>Cigarette/Trade Cards</i>				
<i>Company</i>	<i>Year</i>	<i>Number</i>	<i>Series</i>	<i>Club</i>
Taddy	1913	N/A	Prominent Footballers	Chelsea
Boys Magazine	1920	N/A	Famous Full Backs	Chelsea
Godfrey Phillips	1922	284	Pinnacle	Chelsea
Sport & Adventure	1922	22	Famous Footballers	Chelsea
Walkers Tobacco	192?	N/A	Footballers	Chelsea
Pals Magazine	1922	N/A	Famous Footballers	Chelsea
Champion Comics	1922	39	Famous Football Captains	Chelsea
Chums Magazine	1922	6	Real Colour Photos	Chelsea
Adventure Magazine	1922	N/A	Famous Club Colours and Players	Chelsea
Thompson DC/Rover	1922	N/A	Cricketers & Footballers	Chelsea
Hill R. & J.	1923	25	Famous Footballers	Chelsea
Topical Times	1923	N/A	Footballers	Chelsea
Bunsen Confectionery	1925	607	Famous Figures	Chelsea
Clark's Toffee	1925	19	Footballers	Chelsea
Ogdens	1926	12	Captains of Association Football Clubs and Colours	Chelsea
Pattreiuex	1927	72	Famous Footballers	Chelsea
Pattreiuex	1927	76	Footballers "FA"	Chelsea
Pattreiuex	1927	18	Footballers "FB"	Chelsea
Pattreiuex	1928	8	Footballers "FC"	Chelsea
Pattreiuex	1928	12	Footballers "FC"	Chelsea
Pattreiuex	1928	76	Footballers "FC"	Chelsea
Richards Collection	1997	68	Soccer Stars of Yesteryear (3rd Series)	Chelsea
Fosse Collectibles	1997	15	Soccer Stars 1919-1939 (5th Series)	Chelsea
Fosse Collectibles	1998	17	Soccer Stars 1919-1939 (18th Series)	Chelsea
Futera	1998	8	Captains of Chelsea	Chelsea
Futera	1999	24	Chelsea Greatest	Chelsea
JF Sporting Collectibles	2019	5	Southern League Footballers - Series 2	Croydon Common



Sport & Adventure 1922



Pals Magazine 1922



HARROW	Jack Harry
---------------	------------

<i>Jottings</i>

Actually christened as Harry Harrow

In the 1891 census, he is shown as living with his grandparents Thomas and Eliza at 8 Millers Cottages in Cyprus Terrace, Wallington

In the 1901 census, he is still shown as living with his grandparents - although he is recorded as their son - at 1 Mill Green Cottages in Mill Green Road, Wallington

In the 1911 census, he is still shown as living with his grandparents in Mill Green Road, but he is recorded as a professional footballer and as a boarder

Married Leonie Elizabeth McMullen in January 1913 - they had two children, Mary and John

Although a full back at Chelsea, he had joined Croydon Common as a centre forward and played later as a half back

Won a Croydon Charity Cup winners medal with Mill Green Rovers in 1908-09

Various sources list his height as anywhere between 5ft 7in and 5ft 11.5in!

Appeared for Croydon Common in 3 minor cup matches, scoring 1 goal

Played with former Commoner Ernie Williamson for England against Sweden in 1923

Was one of only two Robins (along with William Balmer) to have played in an F.A. Cup Final and won a full international cap

Although he captained Chelsea in the 1915 F.A. Cup Final, he did not go to the middle for the coin toss

Represented the Football League in a 2-1 win over the Southern League at Highbury on 26.10.1914

Represented the South in a 3-1 win over against England in a trial match at Fulham on 22.2.1922

Represented the South Eastern League in a 2-1 win against the North Eastern League at Newcastle on 11.2.1911

He was the first player to reach 300 appearances for Chelsea; on 15.11.1924 in a 1-1 home draw with Derby County

Was in the Army during WW1, but was demobilised in time to play in Chelsea's successful London Victory Cup team in 1919

After doing munitions work, he joined the Royal Flying Corps as a fitter in 1917 and served at Farnborough

He played for the Chelsea side that won the London Combination in 1915-16 and 1917-18 and the National War Fund Cup in 1918

In 1919, he transferred to the RAF Reserve and played for the Chelsea side that won the London Combination Victory Cup that year

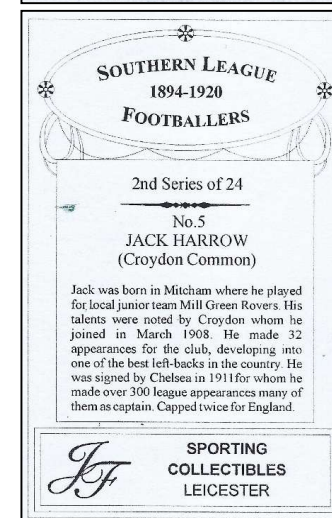
His playing career was ended after he lost the sight in one eye after being hit in the face by a ball in the 1925-26 season

Was on the training staff at Chelsea until 1938 and left following the appointment of W. Birrell (Queens Park Rangers) as manager

Was later an assistant storekeeper for Mitcham Borough Council until he retired in 1956

At the time of his death, he was living at 45 Albert Road, Mitcham

He is buried alongside his wife Leone in London Road Cemetery in Mitcham



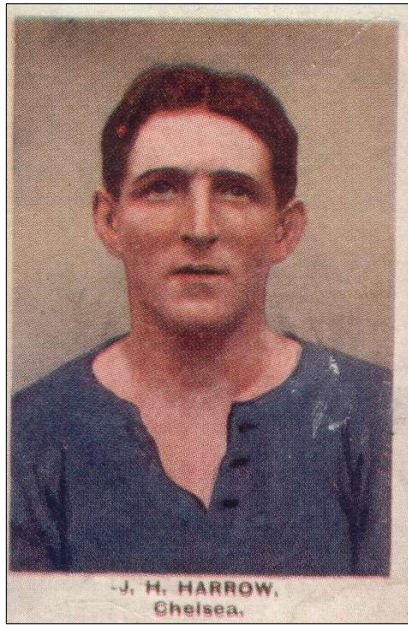
JF Sporting Collectibles 2019

HARROW

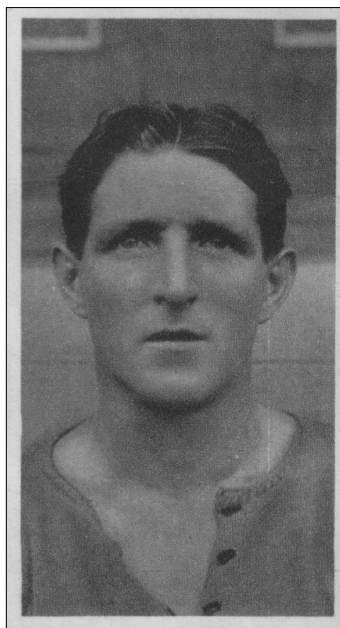
Jack Harry



Champion Comics 1922



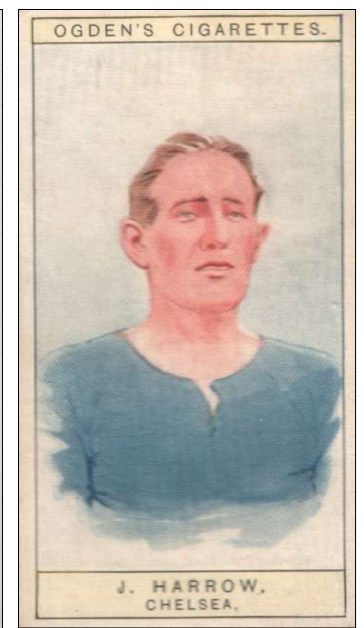
Adventure Magazine 1922



Hill R. & J. 1923



Topical Times 1923



Ogdens 1926



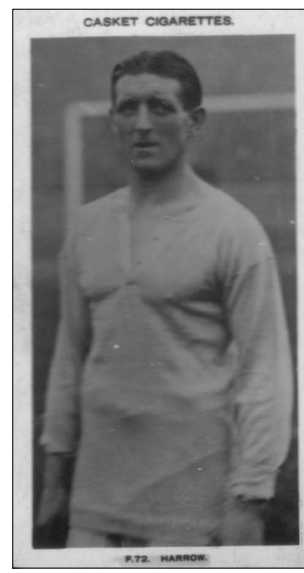
Chums Magazine 1923



Pattreiuex 1927



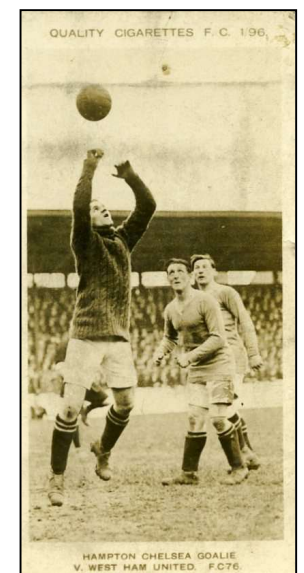
Pattreiuex 1928



Pattreiuex 1927



Pattreiuex 1927



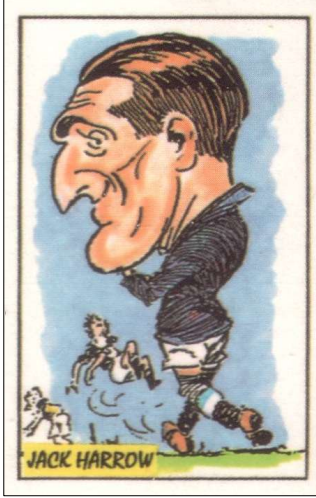
Pattreiuex 1927

HARROW

Jack Harry



Bunsen 1925



Richards Collection 1997



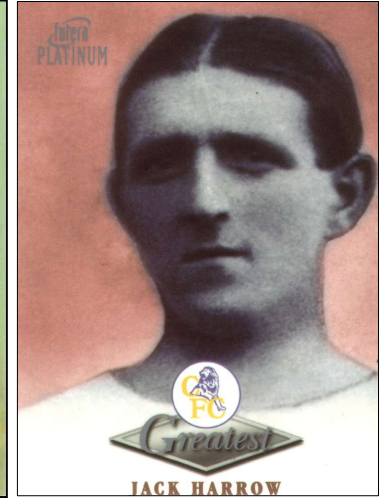
Fosse Collectibles 1997



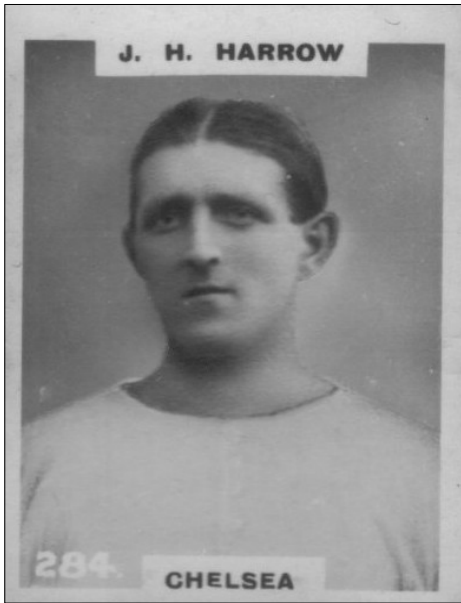
Fosse Collectibles 1998



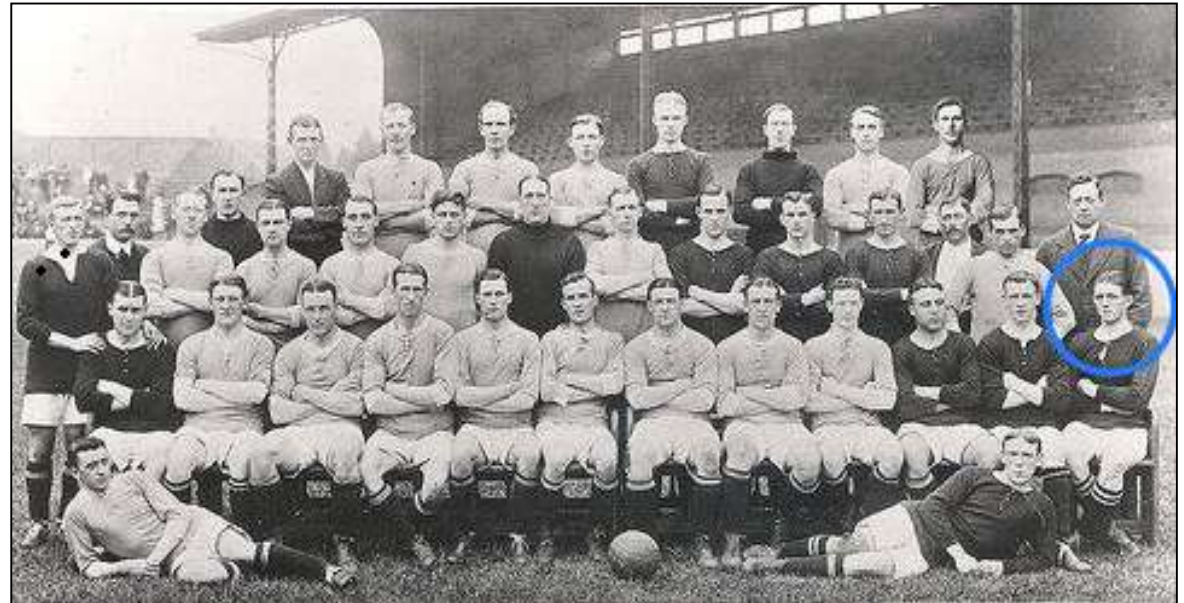
Futera 1998



Futera 1999



Pinnacle 1922



Chelsea 1911-12

HARROW

Jack Harry



Chelsea 1913-14

In 2004, several items of football memorabilia related to Jack Harrow were sold by auction at Sotheby's



A 9ct. gold F.A. Cup runners-up medal, 1914-15,
inscribed THE FOOTBALL ASSOCIATION,
CHALLENGE CUP, RUNNERS UP, CHELSEA
F.C., J.HARROW, 1914-15, suspended from
later chain

The 1915 F.A. Cup final was played at Old Trafford and was known as the Khaki final with much of the crowd composed of soldiers in uniform. Indeed the match was controversial with many believing strongly that the 1914-15 season should have been abandoned at such a time of crisis.

The game was played in wet, gloomy conditions with Sheffield United running out easy 3-0 winners against Chelsea. The F.A. Cup was next competed for in 1920.



A 15ct. gold Football League representative medal, 1914-15,
inscribed THE FOOTBALL LEAGUE,
SOUTHERN LEAGUE, Highbury, London,
OCTR. 26TH 1914, FOOTBALL LEAGUE 2
SOUTHERN LEAGUE 1, J.A. HARROW

Sold for £250



A pale green & white England v Sweden international cap, 1923,
inscribed 1923

England played two matches in Stockholm versus Sweden on 21st and 24th May 1923. England won the games 4-2 & 3-1 respectively. Jack Harrow made his second and final England appearance in the first of these matches. His debut had been in the Ireland match at The Hawthorns in 1922.

Sold for £1000



A purple & white F.A. International Trial Cap, 1921-22
inscribed FA, 1921-22

Sold for £150

HARROW

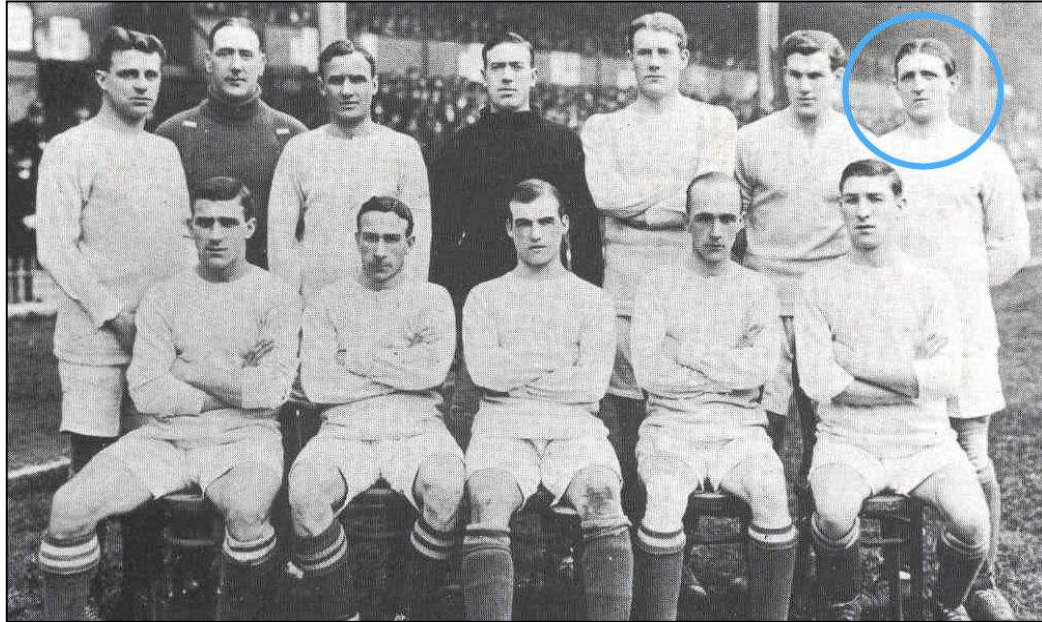
Jack Harry



England v. Ireland 1922



England v. Sweden 1923



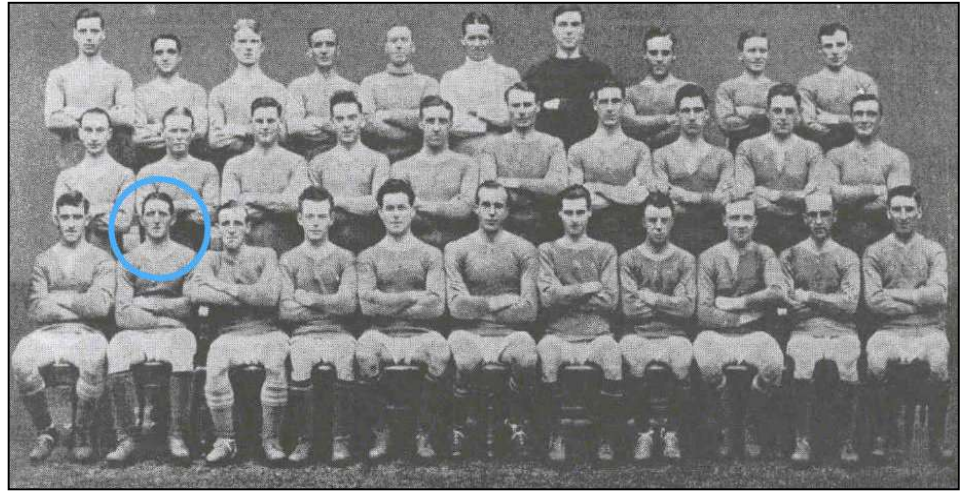
Chelsea F.A. Cup Final 1915



v. Birmingham c.1920



Chelsea 1919-20



Chelsea 1920-21



Chelsea 1921-22



Chelsea 1923-24

HARROW

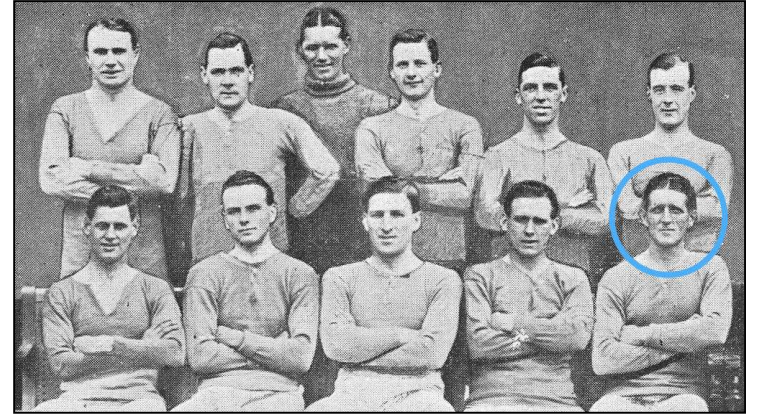
Jack Harry



Chelsea Team Photos from c.1922



Chelsea 1924-25



Chelsea c.1925



Chelsea 1925-26

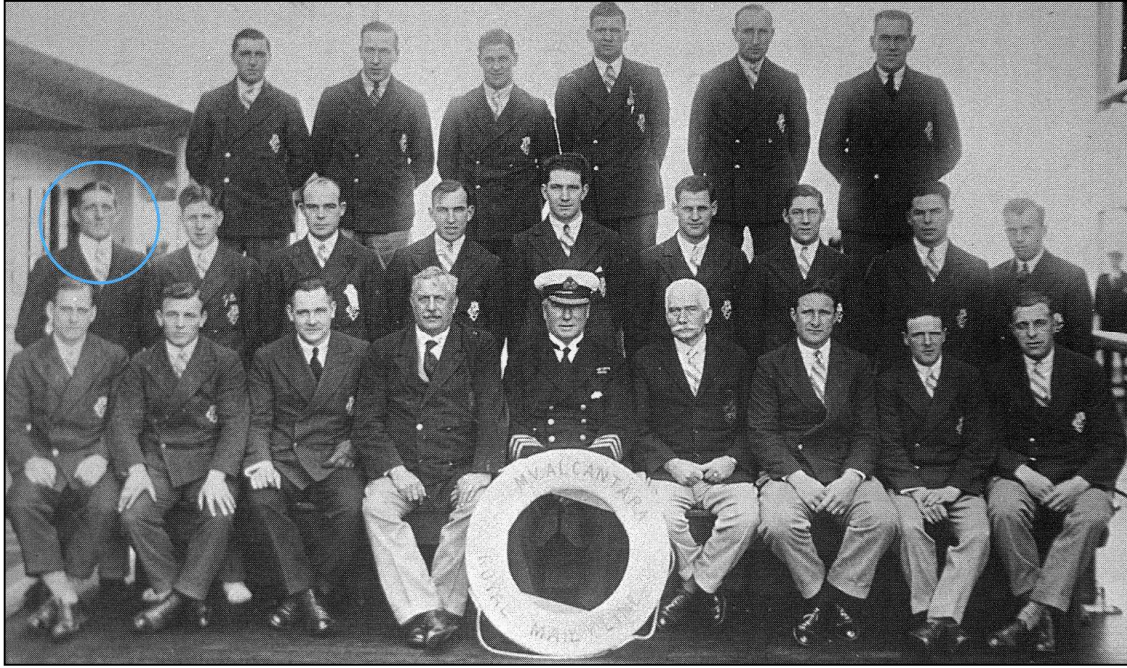
With thanks to Clare Chessun for many of the photographs



Chelsea 1926-27

HARROW

Jack Harry



RAF Southern Aircraft Repair Depot - Farnborough 1917

Two photos from Chelsea's tour of South America in 1929



HARROW

Jack Harry



Chelsea 1913-14

The MANCHESTER HIPPODROME (OXFORD STREET) TWICE NIGHTLY at 6-40 & 8-50
 MATINEES—FRI. and THUR. 1.4.

MANCHESTER UNITED PROGRAMME

CHelsea
 Red and White Stripes and White Kickers

1 MOLTENEUX Goal		
2 BETTRIDGE Right Back	3 HARROW Left Back	
4 TAYLOR Right Half	5 LOGAN Centre Half	6 WALKER Left Half
7 FORD Outside Right	8 HALSE Inside Right	9 THOMSON Centre
Referee: Mr. H. H. TAYLOR		
KICK-OFF. 8-30.		
12 EVANS Outside Left	13 MASTERMAN Inside Left	14 KITCHEN Centre
15 UTLEY Left Half	16 BELSFORD Centre Half	17 STURGESS Right Half
18 ENGLISH Left Back	19 COOK Right Back	
20 GOUGH Goal		

Red and White Stripes and Black Kickers

SHEFFIELD UNITED

Any change in the Team will be notified to number on the board which will be seen round the stadium.

6-40 ARDWICK EMPIRE (TWICE NIGHTLY) 9-0

The line-ups for the 1915 F.A. Cup Final

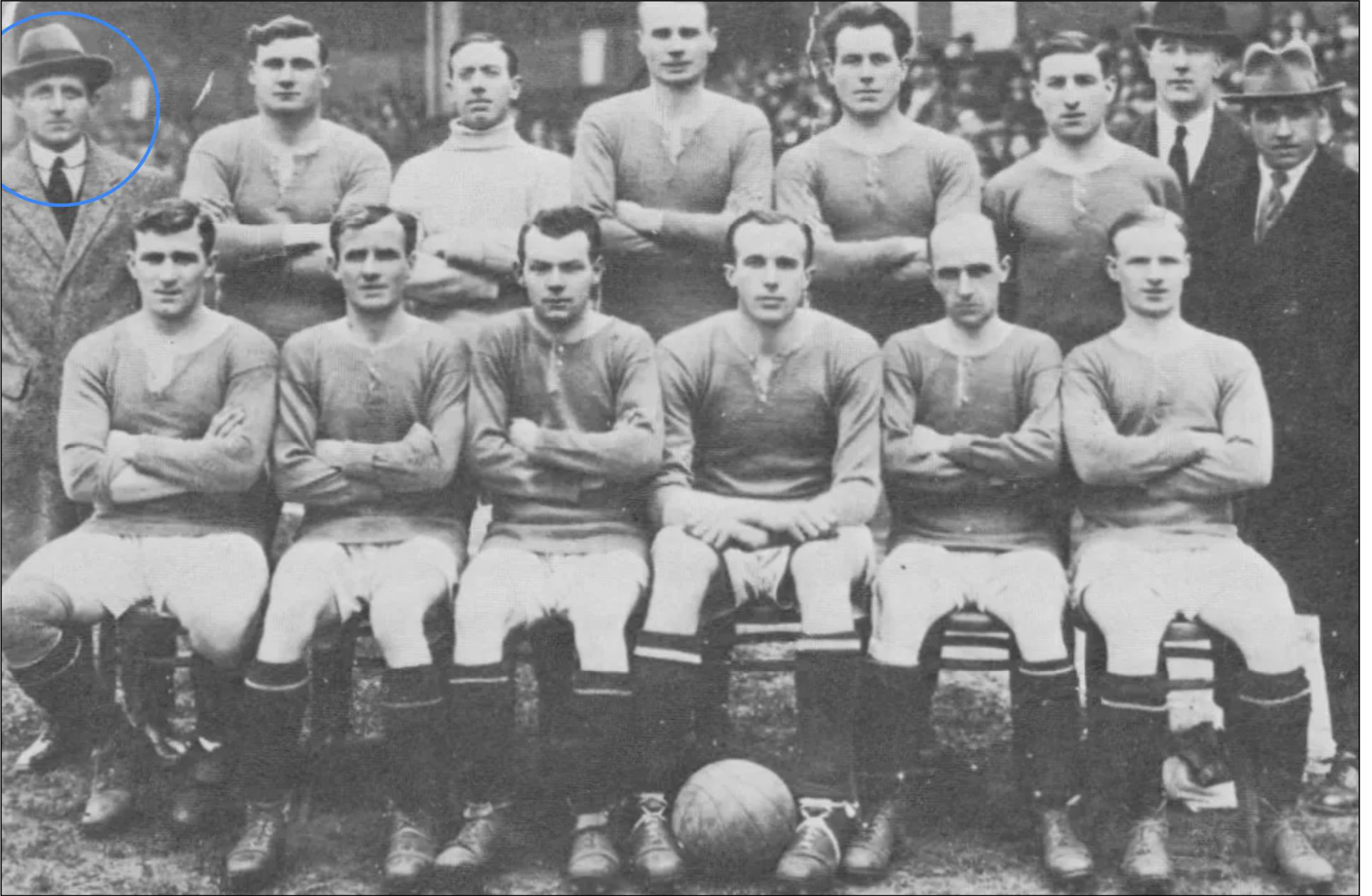


His grave in Mitcham Cemetery, shared with his wife, which the Chelsea Graves Society is seeking to repair



HARROW

Jack Harry



Chelsea 1920-21

HARROW

Jack Harry



At Croydon Common