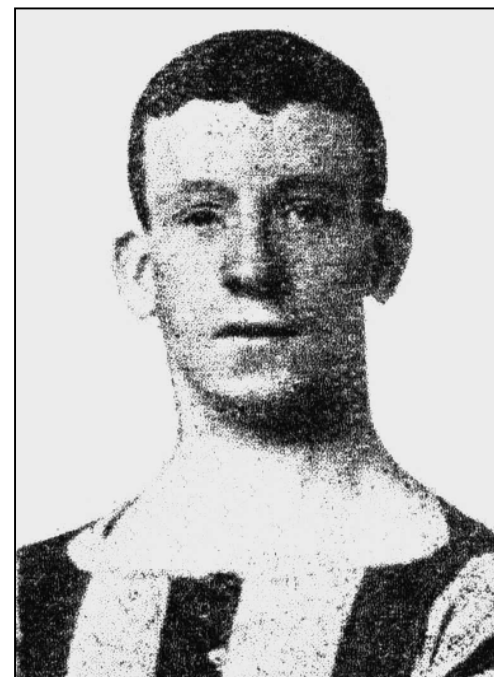


LEIGH	Thomas
--------------	--------

<i>Date of Birth</i>	Q2 1887	<i>Place of Birth</i>	Hollins, near Bury		
<i>Date of Death</i>	25.5.1914	<i>Place of Death</i>	Chorlton, Manchester		
<i>Height</i>	5ft 8in	<i>Weight</i>	11st 3lb	<i>Position</i>	Full Back

<i>Club</i>	<i>Joined</i>	<i>Season</i>	<i>F L</i>		<i>F A</i>		<i>L A</i>		<i>S L</i>		<i>S E</i>		<i>CL</i>		<i>TOTALS</i>	
			<i>A</i>	<i>G</i>	<i>A</i>	<i>G</i>	<i>A</i>	<i>G</i>	<i>A</i>	<i>G</i>	<i>A</i>	<i>G</i>	<i>A</i>	<i>G</i>	<i>A</i>	<i>G</i>
Heywood Springfield																
Haslington	cs1904															
Oldham Athletic	14.5.1906	1906-07			2	0	3	0							5	0
Fulham	17.5.1907	1908-09	3	0											3	0
		1909-10	3	0											3	0
Queens Park Rangers	17.5.1910	1910-11							5	0					5	0
Croydon Common	4.8.1911	1911-12			2	0			18	0	24	0			44	0
Rochdale	10.6.1912												7	0	7	0
South Liverpool	21.2.1913															
Goole Town	9.7.1913				4	0									4	0
		TOTALS	6	0	8	0	3	0	23	0	24	0	7	0	71	0



<i>Internationals</i>	None	<i>F.A. Cup Finals</i>	None
-----------------------	------	------------------------	------

<i>Cigarette/Trade Cards</i>				
<i>Company</i>	<i>Year</i>	<i>Number</i>	<i>Series</i>	<i>Club</i>
Taddy	1907	N/A	Prominent Footballers	Fulham
Taddy	1908	N/A	Prominent Footballers	Fulham
Copes Solace	1910	16	Noted Footballers	Fulham

<i>Jottings</i>
The 1901 Census records him as a 14 year old worker in a bleach works living at 46 Heap Bridge, Heywood with his father John, a publican (48), his mother Susannah (49) and his siblings Harry (25), Mary Alice (23), Fred (22), Jane Ellen (20) and Joseph (18)
The 1911 Census records him as a professional footballer living at 33 Manor Park Road Harlesden as a boarder with the Oake Family
Played in the Oldham Athletic side that won the Lancashire Combination title in 1906-07
Made his Fulham debut on New Year's Day 1909 (1-2 away at Chesterfield)
Assisted Queens Park Rangers Reserves to win the London League Premier Division (Section B) championship in 1910-11
Broke his leg while at Queens Park Rangers
In one game for Croydon Common (0-1 at home to Pontypridd on 23.12.1912) he scored an own goal, missed a penalty and finally went off injured
Appeared for Croydon Common in 2 minor cup matches, without scoring
Played for the SEL versus the NEL (2-0 on 14.10.1911)
Once, when injured during a game, went in goal for Croydon Common (12-2 away at Chesham Town on 1.1.1912)
Played one Lancashire Senior Cup match for Rochdale, a 3-1 win over Accrington Stanley on 23.9.1912

Jottings (Continued)

As can be seen from the extract from the Rochdale Times on 16.11.1912, shown below, he was given notice by Rochdale for "palpable inefficiency", but was reinstated on appeal to the Central League

Played at centre forward in one match for Rochdale Reserves and scored one goal and had another disallowed

Played regularly for Goole Town in the Midland League during the 1913-14 season, where he played on occasion in the same side as former Commoner Fred FENTON

Known at most clubs as "Ginger", his hobby was sprinting and he also won prizes for cycling and swimming

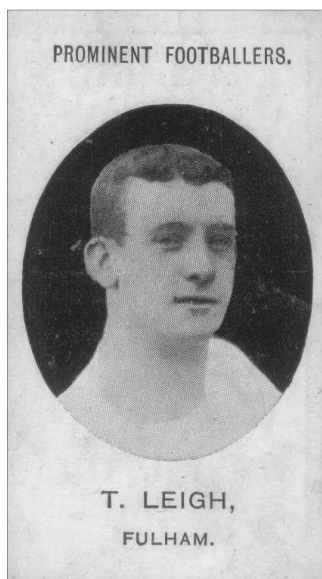
Committed suicide at age 27 by jumping from a third floor window at the Manchester Royal Infirmary following two operations for stomach cancer

Has shown much cleverness, his kicking being generally very clean, while he seems to possess an intuitive knowledge of the point of attack (Rochdale Times)

Dandy, bold, vigorous and a very fast full back



Copes Solace 1910



Taddy 1907



Taddy 1908

The Thomas Leigh Case.

Recently the Rochdale A.F.C. gave one of their full-backs, Thomas Leigh, a fortnight's notice, in accordance with rule, for "palpable inefficiency," and Leigh made an appeal against the notice to the governing body, the Central League.

A commission consisting of Mr. W. A. Wilkinson, the Manchester City chairman, Mr. H. F. Hamer, the Bury secretary, and Mr. W. Cuff, the Everton secretary and hon. secretary of the League, was appointed to deal with the matter, and they held a long sitting on Wednesday night in Manchester.

Representatives of the club and the player attended, and after a full inquiry the commission decided that the Rochdale Club had failed to show any satisfactory reason for terminating the agreement, and they ordered it to stand. They also ordered the wages due to the player to be paid, and decided that the club must pay the costs of the commission.

It is quite possible that Rochdale may appeal to the F.A. against the findings of the commission.

LEIGH

Thomas



Fulham 1907-08



Fulham 1908-09