

|             |                 |
|-------------|-----------------|
| <b>LEVI</b> | Reginald Samuel |
|-------------|-----------------|

|                      |           |                       |                            |
|----------------------|-----------|-----------------------|----------------------------|
| <i>Date of Birth</i> | 9.4.1889  | <i>Place of Birth</i> | Chelsea                    |
| <i>Date of Death</i> | 22.5.1946 | <i>Place of Death</i> | Willesden General Hospital |
| <i>Height</i>        |           | <i>Weight</i>         |                            |
|                      |           | <i>Position</i>       | Forward                    |

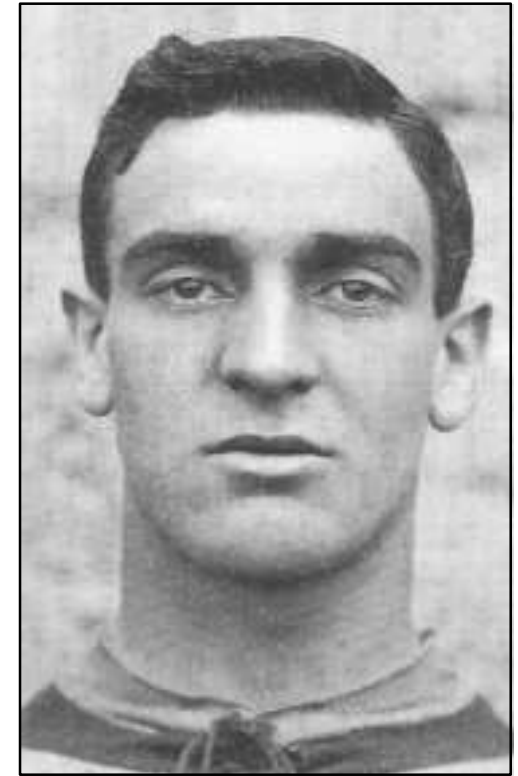
| <i>Club</i>           | <i>Joined</i> | <i>Season</i> | L C      |          | TOTALS   |          |
|-----------------------|---------------|---------------|----------|----------|----------|----------|
|                       |               |               | A        | G        | A        | G        |
| Aberdare              | 1908          |               |          |          |          |          |
| Norwich City          | 30.8.1910     |               |          |          |          |          |
| Barrow                | 5.1911        |               |          |          |          |          |
| Oldham Athletic       | 5.1912        |               |          |          |          |          |
| Ton Pentre            | 1913          |               |          |          |          |          |
| Llanelly              | 1914          |               |          |          |          |          |
| <b>Croydon Common</b> | 1915          | 1915-16       | 2        | 1        | 2        | 1        |
| Llanelly              | 1915          |               |          |          |          |          |
|                       |               | <b>TOTALS</b> | <b>2</b> | <b>1</b> | <b>2</b> | <b>1</b> |

(see note below)

|                       |      |                        |      |                              |      |
|-----------------------|------|------------------------|------|------------------------------|------|
| <i>Internationals</i> | None | <i>F.A. Cup Finals</i> | None | <i>Cigarette/Trade Cards</i> | None |
|-----------------------|------|------------------------|------|------------------------------|------|

|                 |
|-----------------|
| <i>Jottings</i> |
|-----------------|

|   |
|---|
| One of seven brothers   |
| The local press were confused between him and his brother HAROLD, as were the Norwich newspapers some years earlier, and so the Croydon appearances could have been by either brother |
| No first team appearances for either Norwich City or Oldham Athletic  |
| Played for Llanelly from 1914 to 1920, but appeared for the Common while working in a London munitions factory during WW1   |
| Was the top scorer for Llanelly in the 1913-14 season with 18 goals   |
| Was a bus driver in later life, when living at 300 The Broadway, Hendon   |
| Apparently shorter and lighter than his brother   |
| Once won the Windsor to London marathon   |
| Was living at 15 Stafford Road, Kilburn Lane, London NW16 at the time of his death  |
| Upon probate on 18.9.1946 he left his widow Elizabeth May an estate valued at £859.10s.10d  |

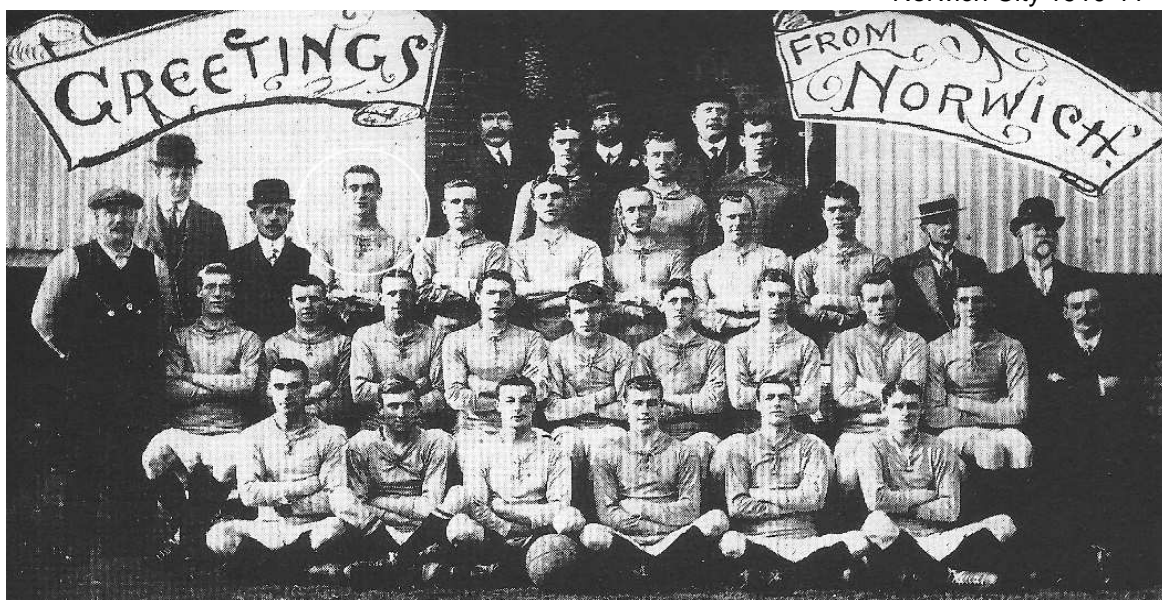


LEVI

Reginald Samuel



Norwich City 1910-11



Norwich City 1910-11