

<b>NASH</b>	Robert Albert
-------------	---------------

<i>Date of Birth</i>	1889	<i>Place of Birth</i>	Bedminster, Bristol		
<i>Date of Death</i>	Q4 1960	<i>Place of Death</i>	Weobley, Herefordshire		
<i>Height</i>	5ft 8.5in	<i>Weight</i>	11st 4lb	<i>Position</i>	Half Back

<i>Club</i>	<i>Joined</i>	<i>Season</i>	F A		S L		S F		L C		TOTALS	
			A	G	A	G	A	G	A	G	A	G
Horfield Barracks												
Bristol City	3.1907											
Mardy	cs 1909											
Aberdare	6.1910											
<b>Croydon Common</b>	8.1913	1913-14	1	0	23	1	8	2			32	3
Brentford		1916-17							1	0	1	0
		1917-18							1	0	1	0
		<b>TOTALS</b>	<b>1</b>	<b>0</b>	<b>23</b>	<b>1</b>	<b>8</b>	<b>2</b>	<b>2</b>	<b>0</b>	<b>34</b>	<b>3</b>

<i>Internationals</i>	None	<i>F.A. Cup Finals</i>	None	<i>Cigarette/Trade Cards</i>	None
-----------------------	------	------------------------	------	------------------------------	------

<i>Jottings</i>
-----------------

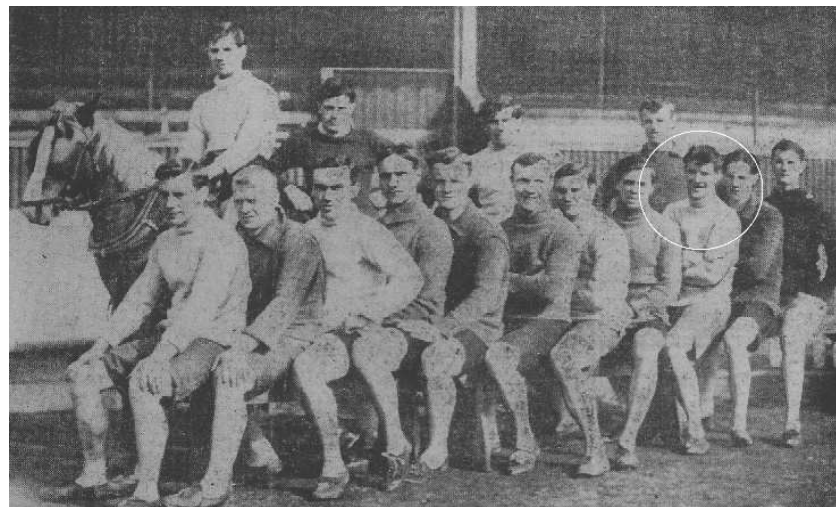
No first team appearances for Bristol City

Appeared for Croydon Common in 2 minor cup matches, without scoring

The 1891 Census records him with a birth date of 1887, living with his parents David and Jane and four siblings in Hampton Terrace, Bedminster

The 1911 Census records him with a birth date of 1889, as a professional footballer living at 28 Fothergill Street, Abernant, Aberdare with his wife Florence and daughter Marjory

Served in the Somerset Light Infantry with Army number 7262, and with a birth date of 1885, and his war service ended his time at Croydon Common



At Croydon Common