

RYAN	Charles William
-------------	-----------------

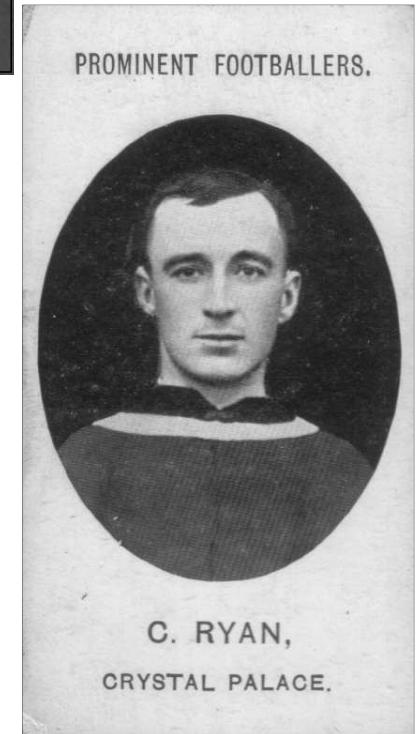
<i>Date of Birth</i>	Q3 1883	<i>Place of Birth</i>	Camberwell		
<i>Date of Death</i>	24.1.1962	<i>Place of Death</i>	Harlesden		
<i>Height</i>	5ft 5in	<i>Weight</i>	11st	<i>Position</i>	Half Back

<i>Club</i>	<i>Joined</i>	<i>Season</i>	S L		F A		W L		U L		TOTALS	
			A	G	A	G	A	G	A	G	A	G
Wingfield House	1897											
Hitchin												
Ilford												
Nunhead	1903											
Crystal Palace	1906	1906-07	26	0	6	0			5	0	37	0
		1907-08	28	1	2	0	7	0			37	1
		1908-09	28	1	4	0	7	1			39	2
Croydon Common	cs1909	1909-10	34	2	3	1					37	3
Peterborough City	10.1910											
Peterborough GN Loco	cs1911											
		TOTALS	116	4	15	1	14	1	5	0	150	6

<i>Internationals</i>	None	<i>F.A. Cup Finals</i>	None
-----------------------	------	------------------------	------

<i>Cigarette/Trade Cards</i>				
<i>Company</i>	<i>Year</i>	<i>Number</i>	<i>Series</i>	<i>Club</i>
Taddy	1908	N/A	Prominent Footballers	Crystal Palace

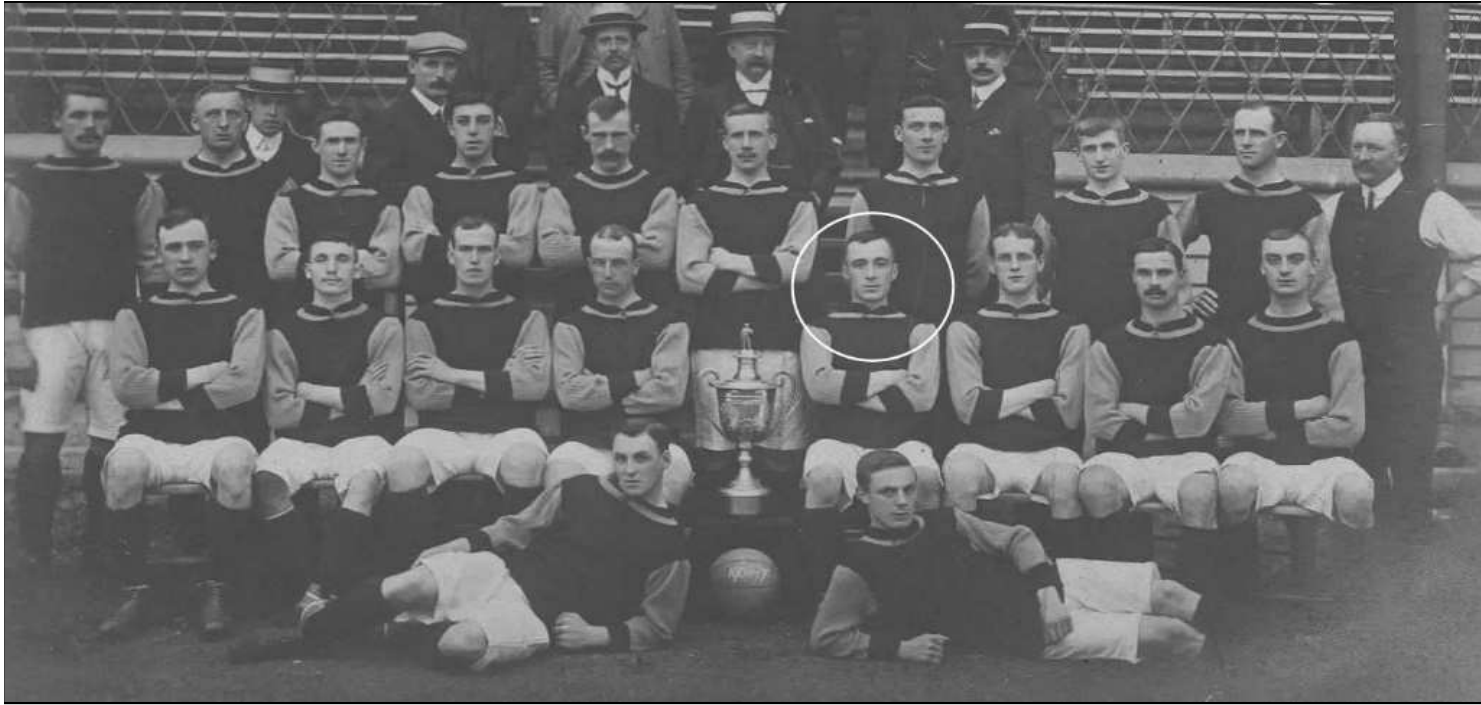
<i>Jottings</i>
His first club, Wingfield House, morphed into Nunhead, meaning that he was at the club for nine years
Won numerous medals with Wingfield House and Nunhead in local cup competitions
Appeared for Croydon Common in 2 minor cup matches, without scoring
Was part of the Crystal Palace squad that won the United League championship in 1906-07
Played twice for Crystal Palce in the London Professional Charity Cup in 1908-09
Represented London and Surrey as an amateur and played cricket at a senior level
The 1911 Census records him as a carpenter living at 32 Crawthorne Road, Peterborough with his wife Lydia and children Rose (9), Marie (3) and James (2) - three other children had died
His hobbies were apparently dog and poultry fancying



Taddy 1908

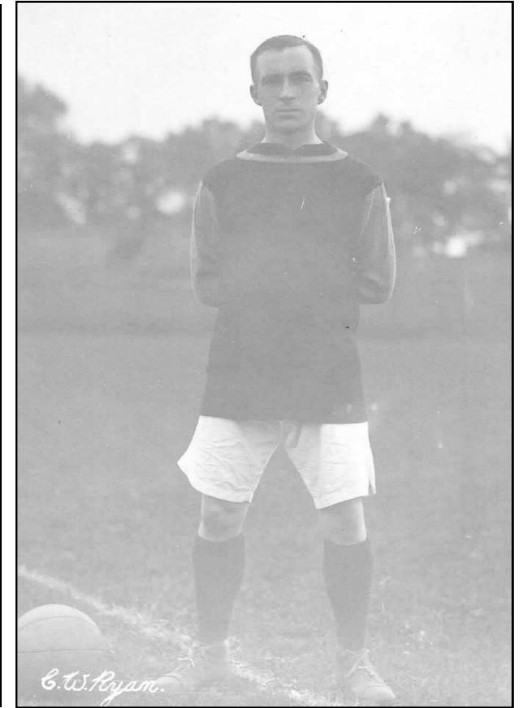
RYAN

Charles William



Crystal Palace 1906-07

With thanks to Ian Weller for the Crystal Palace photographs



At Crystal Palace

RYAN

Charles William



Crystal Palace 1907-08

RYAN

Charles William



Crystal Palace 1908-09

RYAN

Charles William



Crystal Palace 1906-07