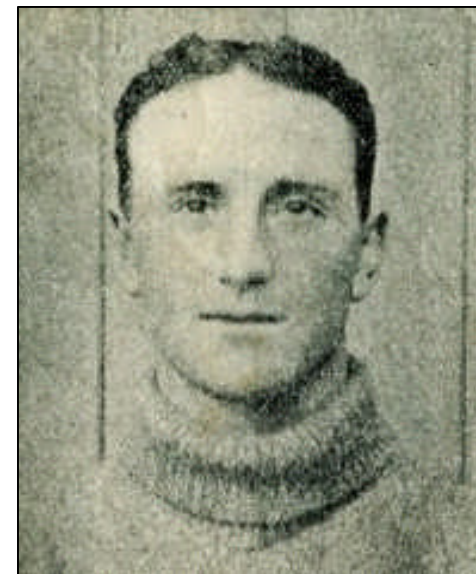


WEBBER	George Albert
---------------	---------------

<i>Date of Birth</i>	Q1 1892	<i>Place of Birth</i>	Croydon		
<i>Date of Death</i>	17.3.1953	<i>Place of Death</i>	Leicester		
<i>Height</i>	6ft	<i>Weight</i>	13st	<i>Position</i>	Half Back



<i>Club</i>	<i>Joined</i>	<i>Season</i>	S L		S E		L C		M S		TOTALS	
			A	G	A	G	A	G	A	G	A	G
Croydon Gas Company												
Croydon Common	1912	1911-12	3	0	4	0					7	0
Leicester Fosse	cs1913											
Swansea Town	6.1914											
Croydon Common	cs1915	1915-16					8	0			8	0
Leicester Fosse		1915-16							1	?	1	0
		1916-17							3	?	3	0
Balmoral United												
Atherstone Town	8.1919											
Stableford's	1920											
		TOTALS	3	0	4	0	8	0	4	0	19	0

<i>Internationals</i>	None	<i>F.A. Cup Finals</i>	None	<i>Cigarette/Trade Cards</i>	None
-----------------------	------	------------------------	------	------------------------------	------

<i>Jottings</i>

Followed manager Jack Bartlett to Leicester Fosse and Swansea Town
No first team games for Leicester Fosse in his first spell, despite playing in every game of the pre-season tour of Sweden in June 1913
Two of his wartime appearances for Leicester Fosse were on the left wing
His appearances for Leicester club Balmoral United were made while on leave from the Navy
The 1911 Census records him as an assistant storekeeper living at home with his parents Stephen, a bootmaker, and Jane and five siblings - another child having died
Died at his home in Laburnham Road, Leicester at the age of 61

WEBBER

George Albert



Leicester Fosse 1913-14

WEBBER

George Albert



Swansea Town 1914-15