

| | |
|------------------|--------|
| WHITTAKER | Nathan |
|------------------|--------|

| | | | |
|----------------------|----------|-----------------------|------------------------|
| <i>Date of Birth</i> | 3.2.1863 | <i>Place of Birth</i> | Church, Lancashire |
| <i>Date of Death</i> | 3.1922 | <i>Place of Death</i> | Guy's Hospital, London |
| <i>Height</i> | | <i>Weight</i> | <i>Position</i> |

| |
|---------------------|
| <i>Club</i> |
| Accrington |
| Westminster College |
| Tottenham Hotspur? |
| Hotspur F.C.? |

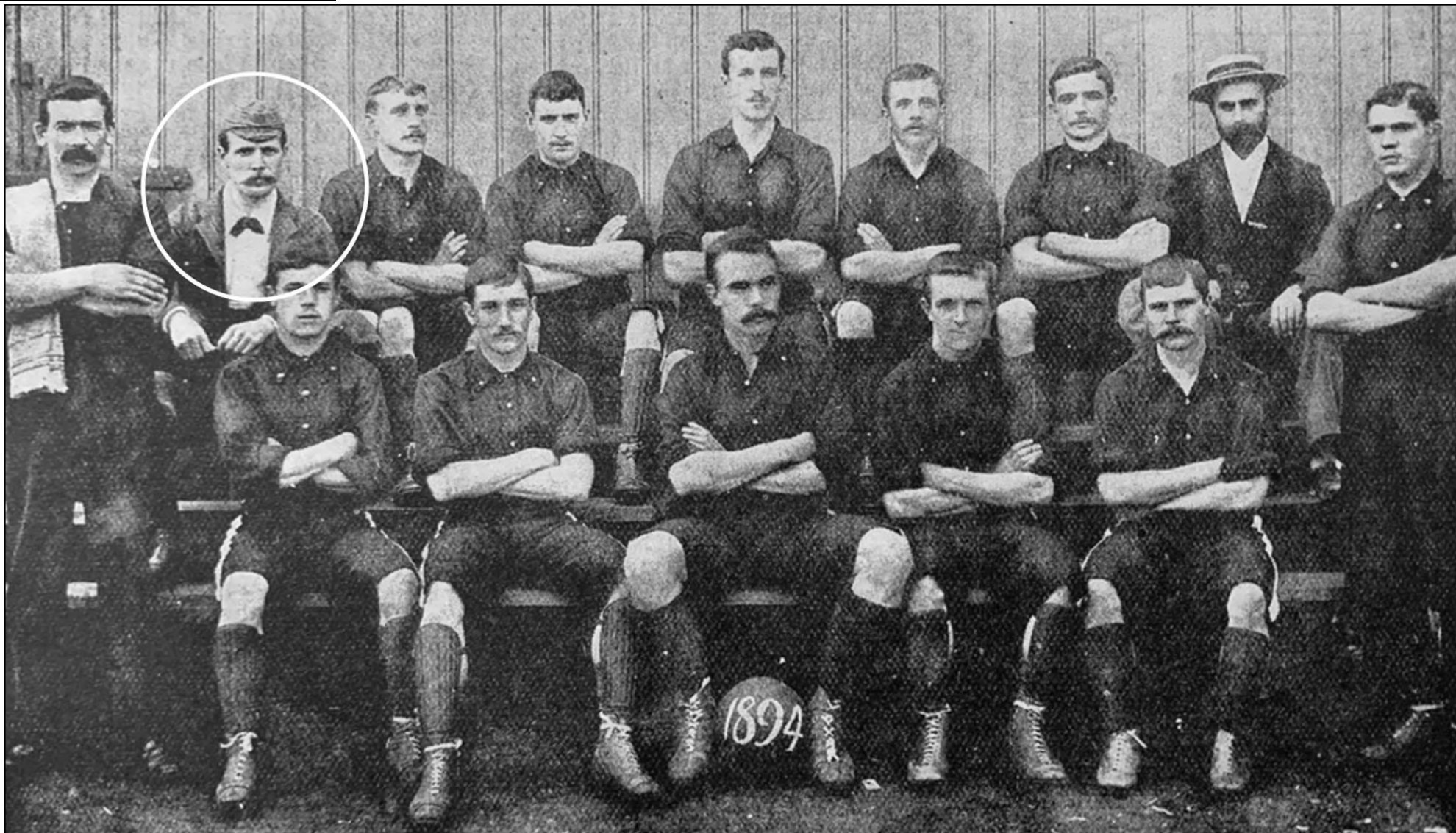
| | | | | | |
|-----------------------|------|------------------------|------|------------------------------|------|
| <i>Internationals</i> | None | <i>F.A. Cup Finals</i> | None | <i>Cigarette/Trade Cards</i> | None |
|-----------------------|------|------------------------|------|------------------------------|------|

| |
|--|
| <i>Jottings</i> |
| Was generally known as Nat |
| Began his career with Accrington, one of the twelve founder members of the Football League, before moving to London to take up a teaching position |
| Captained the Westminster College eleven while teaching and, around this time, also played for either Tottenham Hotspur or Hotspur F.C. (depending upon sources) |
| Was appointed honorary secretary of the Southern League upon its formation in 1894 |
| Regularly refereed Football League and Southern League matches |
| Refereed the 1907 F.A. Cup Final when Sheffield Wednesday beat Everton 2-1 at the Crystal Palace in front of a crowd of 85,000 |
| Attended the meeting at the Pembroke Hall in Croydon on 25.04.1907 when the proposal to form a professional Croydon Common club was announced |
| Was once followed to the station by a "howling mob of youths" after he had refereed a match in 1894 that ended Millwall Athletic 4 Luton Town 3 |
| Was appointed the manager of Croydon Common in December 1909 when the club was bottom of Division One of the Southern League, but he barely lasted two months |
| Was the only manager of Croydon Common not to have made at least one first team appearance in a competitive fixture |
| His brother SPENCER died in 1910 when he fell from a moving train while manager of Burnley |



WHITTAKER

Nathan



For some reason photographed with Millwall Athletic in 1894; the postcard caption referred to him as "referee"

WHITTAKER

Nathan



For some reason photographed with Leyton in 1905-06; the postcard caption referred to him as "referee"

WHITTAKER

Nathan



CROYDON COMMON F.C. Require a **MANAGER**
or **PLAYER-MANAGER** next Season, duties to
commence on May 1.—Apply at once, giving full
particulars as to salary, &c., to **Mr. N. WHITTAKER,**
52, Beccroft-road, Brockley, S.E.

The advertisement in the Athletic News of 7.2.1910 for a manager to replace him



The envelope of a letter sent to him a few months after he had refereed the 1907 F.A. Cup Final